

Reduce Impact Sound Perception While Giving a Durable Tiled Surface With Schlüter®-DITRA-SOUND and ULTRA TILE Adhesive

Schlüter®-DITRA-SOUND is an acoustic floor system that not only reduces noise, but actually protects the tiled surface as well, overcoming one of the major problems of tiling onto acoustic floors.

While reducing the impact sound of floor constructions (test values according to BS EN ISO 140-8), **Schlüter®-DITRA-SOUND** was also specially designed to ensure that the tiled surface is highly durable, bearing loads up to 5 kN/m². It is a bonded impact sound insulation for tile coverings, made of a heavy polyethylene mat, which has an anchoring fleece laminated on both sides to bond with **ULTRA TILE ProFlex SP** adhesive.

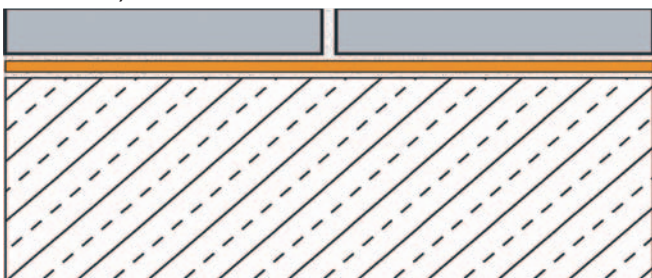
At only 3.5mm thick, **Schlüter®-DITRA-SOUND** also gives a low construction height.

Installation of ceramic tiles to Schlüter®-DITRA-SOUND with ULTRA TILE adhesive:

In order to install **Schlüter®-DITRA-SOUND** correctly, the substrate must be level, ready to bear weight and free of all substances that may weaken the bond. Any levelling must be completed prior to the installation.

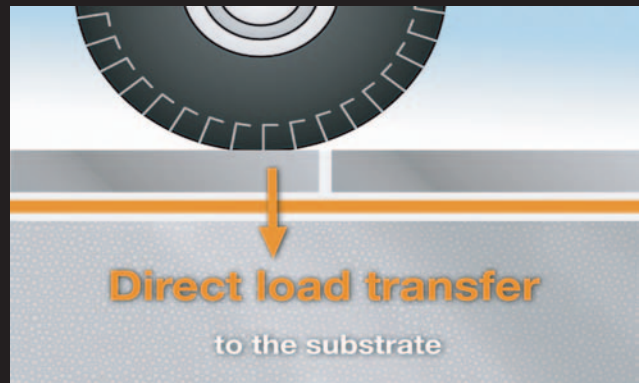
Install the self adhesive edge strip **Schlüter®-DITRA-SOUND-RSK** along the walls or upright construction fixtures.

Dry lay individual courses of **Schlüter®-DITRA-SOUND** making any required cuts, ensuring the joints are tightly abutted. Apply **ULTRA TILE ProFlex SP** thin-bed adhesive over the clean, load bearing substrate with a notched trowel (recommended size 3 x 3 mm or 4 x 4 mm).



Lay **Schlüter®-DITRA-SOUND** mat into wet **ULTRA TILE ProFlex SP** adhesive, ensuring the joints are tightly abutted. Use a float or roller to press **Schlüter®-DITRA-SOUND** into the adhesive.

Cut the edge strip **Schlüter®-DITRA-SOUND-RSK** with a knife (making sure that the tile covering has no direct contact with the wall or any upright construction fixtures after installation).



To avoid sound bridges, cover all joints with the self-adhesive joint covering, **Schlüter®-DITRA-SOUND-KB**. Walking boards are recommended for taking material over the installed acoustic material, and to prevent it from peeling off the substrate. Use **Schlüter®-DILEX** profiles for neat floor to wall transitions.

The tiles may be installed in the normal way with **ULTRA TILE ProFlex SP** adhesive immediately after the installation of **Schlüter®-DITRA-SOUND**.



50% noise reduction - The impact sound reduction of 13dB achieved by **Schlüter®-DITRA-SOUND** means that the impact sound perception is cut by more than half.

The heavy polyethylene material absorbs much of the impact sound created by walking and substantially reduces the "drum roll" effect of sound being reflected off hard surfaces. This makes it ideally suited both for new and refurbishment projects.

Reduce Impact Sound Perception While Giving a Durable Tiled Surface With Schlüter®-DITRA-SOUND and ULTRA TILE Adhesive

As well as providing impact sound insulation, **Schlüter®-DITRA-SOUND** protects the tiled surface by bridging cracks in the substrate which are not expected to widen significantly, ensuring that those cracks are not transferred to the tiles. Because the material is a heavy matting that cannot be compressed, it is suitable for applications of up to 5 kN/m².

For applications where the substrate needs to be protected from moisture ingress, e.g. bathrooms, **Schlüter®-DITRA-SOUND** can be combined with **Schlüter®-KERDI** and **Schlüter®-KERDI-COLL** to create a bonded waterproofing assembly.

ULTRA TILE ProFlex SP is a single part, rapid set tile adhesive specially formulated to achieve enhanced adhesion and flexibility in areas where slight movement or vibration can occur. It is available in white and grey in 20 Kg and 10 Kg bags.



This information is intended as a guide only and should be used in conjunction with our current technical information and recommendations. Please refer to Schlüter Datasheet 6.3 Schlüter®-DITRA-SOUND or www.schluter.co.uk.
For full technical information on ULTRA Tile adhesives, please refer to www.ultratileadhesives.co.uk.